

KUDO32

KUDO32 Installation instructions



Kudo

is a Hong Kong based company specialised in selling equipments like scissor lift, hand crank platform, etc., as well as spare parts like wheels, batteries, etc.

We offer a great variety of items procuring from all over the world. We also enjoy the advantage of product development all over China which is already a well-developed manufacturing base.

With our eagerness to offer the highest quality product with competitive prices, along with our professional consultation and customer service, we aim to become your trustful partner and supplier.

To provide one stop solution to satisfy customers' need is always our top priority mission, we achieve such goal by:

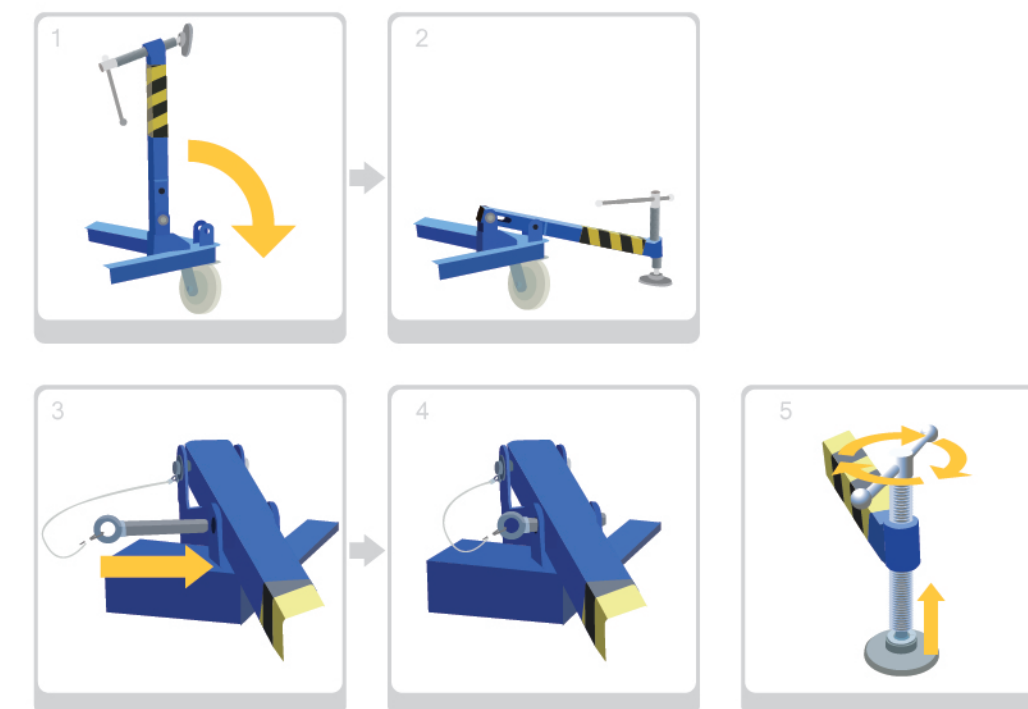
Working closely with our transportation companies to ensure smooth and on-time shipment. Co-operate with testing labs and certification company in order to assure all our products would meet all the requirements need for compliance with European Union Directives and International Regulations, as well as other license requirements for regions all over the world.

Thank you for choosing Kudo Parts and Equipments Limited.

KUDO32 Installation instructions

1

輕輕放下支腳，用銷軸插入鎖住，並調整支撐腿
Gently put down the support legs, insert the pin to lock after adjustment



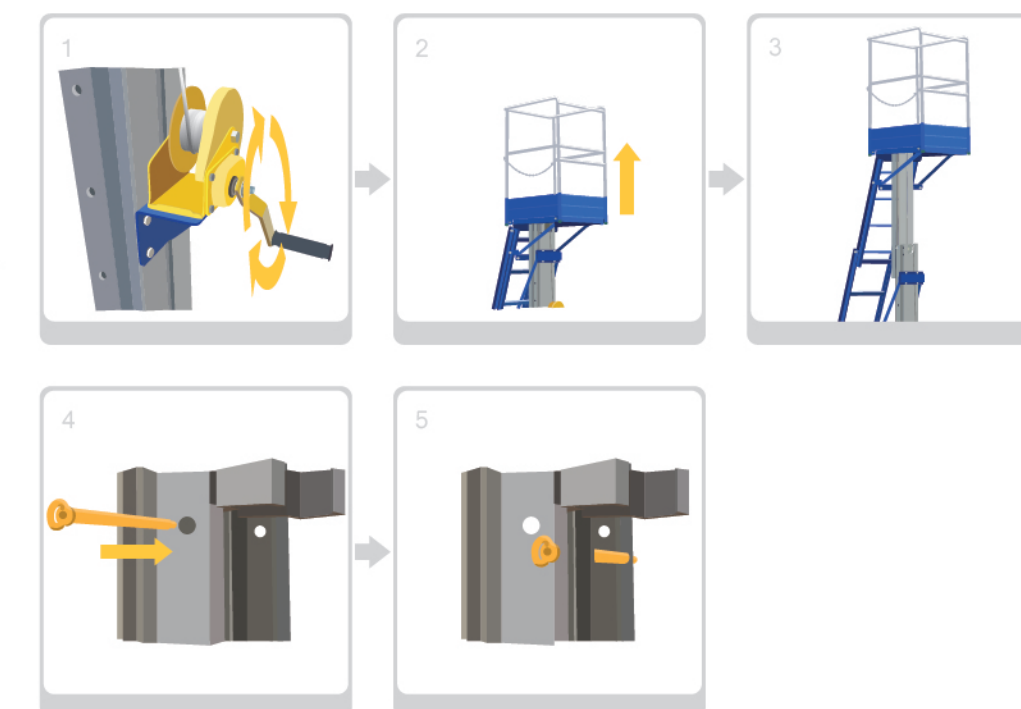
2

輕輕放下支腳，用銷軸插入鎖住，並調整支撐腿
Flips the barricades and then locked with the latch



3

用手搖器把平台調整到適合的工作高度，並用保險銷插入上好安全螺絲帽
Rotate to adjust the platform to a suitable height and locked with the pin to secure in position



4

用手搖器把平台調整到適合的工作高度，並用保險銷插入上好安全螺絲帽
Rotate to adjust the platform to a suitable height and locked with the pin to secure in position

